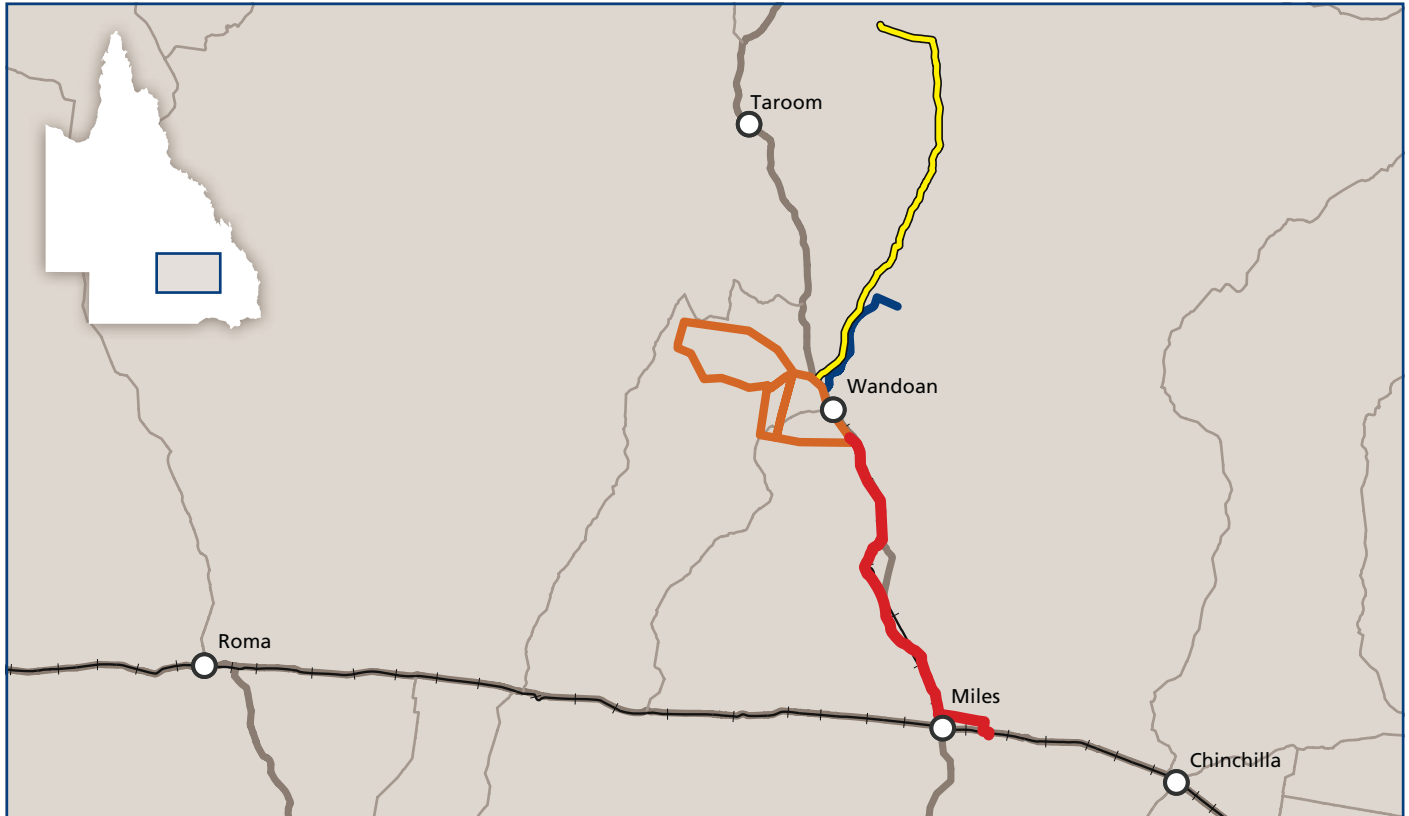


# About the Wandoan Coal Project



## Wandoan Coal Project Fact Sheet



● Mining lease application ● Major road ● Secondary road ● Gas Supply Pipeline ● Glebe Weir Water Pipeline ● Southern CSM Water Supply Pipeline

*The Wandoan Coal Project is proposed to be located west of the Wandoan township.*

The Wandoan Coal Project is a proposed open-cut thermal coal mine immediately west of the Wandoan township.

The proposed mining lease application area covers approximately 32,000 hectares. The mine would include an open-cut coal mine, a coal handling and preparation plant, and support facilities.

With an expected life of more than 30 years, the mine would produce thermal coal which would be crushed, sized and washed before being transported by rail to port facilities on the Queensland coast and exported around the world, or sold to the domestic market. It is anticipated that around 30 million run-of-mine tonnes of coal would be mined at Wandoan annually.

The Wandoan Coal Project has the potential to provide significant opportunities for the

surrounding communities and the Queensland economy, with potential for new employment, infrastructure improvements, Government royalties and flow-on effects to businesses in the local Wandoan, Taroom, and Miles areas.

Mine construction would take two to three years, with a start date to be determined once the Project receives all necessary approvals.

### Who is undertaking the Project?

The Project is being delivered by Xstrata Coal Queensland and funded through a joint venture between Xstrata Coal Queensland (75% ownership), ICRA (Itochu) Pty Ltd (12.5% ownership) and Sumisho Coal Australia (12.5% ownership).

Xstrata Coal Queensland employs over 2,500 Queenslanders. It manages six mining operations and one port in Queensland, located at Rolleston, Oaky Creek, Newlands,

Collinsville and the Abbot Point Coal Terminal. Xstrata Coal Queensland is committed to caring for the communities and environments in which it operates. It does this through best practice management programs and by implementing Xstrata's 17 Sustainable Development (SD) Standards, which focus on achieving excellence in health, safety, environment and community management. Each of these Standards will be adopted for the Wandoan Coal Project.

Xstrata was named the mining sector leader for the fourth consecutive year in the Dow Jones Sustainability Index 2010–11. It was also named a platinum level company and the mining sector leader by the United Kingdom's Business in the Community's Corporate Responsibility Index.

# About the Project approval process



## Wandoan Coal Project Fact Sheet



In March 2011, Xstrata Coal's Wandoan Coal Project received conditional environmental approval from the Commonwealth Government. The environmental approval follows consideration of the project's Environmental Impact Statement (EIS), Supplementary EIS, and the Queensland Coordinator-General's report for the Wandoan Coal Project by the Commonwealth Department of Sustainability, Environment, Water, Population and Communities.

The approval covers the construction and operation of an open-cut coal mine and supporting infrastructure in the Mining Lease Application areas immediately west of Wandoan; construction and operation of an underground water supply pipeline; raising of the existing Glebe Weir and construction of an associated pipeline to transport water from the Dawson River to the proposed Wandoan Coal Mine.

Commonwealth Government approval is conditional on Xstrata Coal implementing measures to protect biodiversity and allows Xstrata Coal to proceed with the final stage of the Mining Lease Application.

The Wandoan Coal Project received environmental approval from the Queensland Government in accordance with the conditions in the Coordinator-General's Report for the Project in November 2010.

### What has occurred?

- Terms of Reference for the EIS were approved by the Queensland Government.
- The EIS was released for public comment in December 2008, and submissions closed on 2 February 2009.
- Submissions were considered by the Queensland Coordinator-General and communicated with the Wandoan Coal project team.
- The project team developed a Supplementary EIS to address issues raised in the public submissions.
- The Supplementary EIS was submitted in November 2009 to the Queensland Coordinator-General for evaluation.



The Wandoan Coal Project has been established to undertake feasibility studies for an open-cut thermal coal mine.

### Where are we now?

- The Supplementary EIS was evaluated by the Coordinator-General who published an evaluation report, which recommended approval and stated conditions of approval.
- The Coordinator-General's evaluation report was submitted to the Commonwealth Minister for Sustainability, Environment, Water, Population and Communities for approval under the *Commonwealth Environment Protection and Biodiversity Conservation (EPBC) Act 1999*.
- The Project gained conditional environmental approval from the Commonwealth Department of Sustainability, Environment, Water, Population and Communities in March 2011.

### What happens now?

- The Queensland Department of Environment and Resource Management processes the Environmental Authority application based on the Coordinator-General's report and publicly advertises the draft Environmental Authority and Environmental Management Plan.
- The Queensland Department of Employment, Economic Development and Innovation processes the Mining Lease Application.
- Objections to the Environmental Authority and mining lease are heard in the Land Court, which may recommend the application be granted or refused.

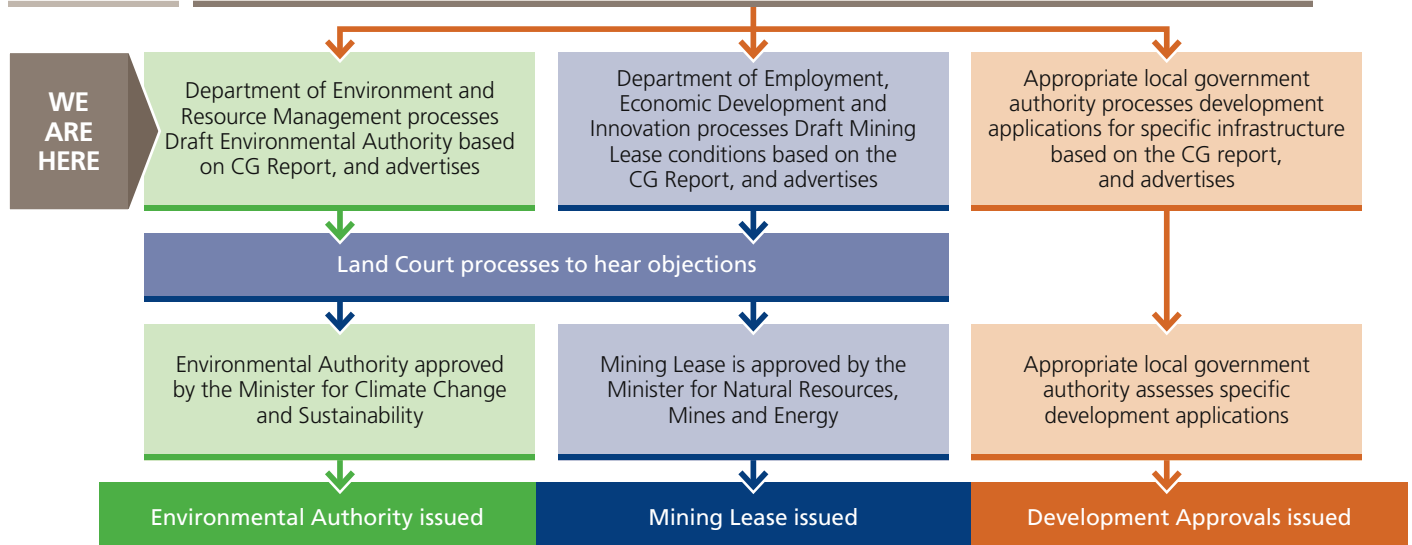
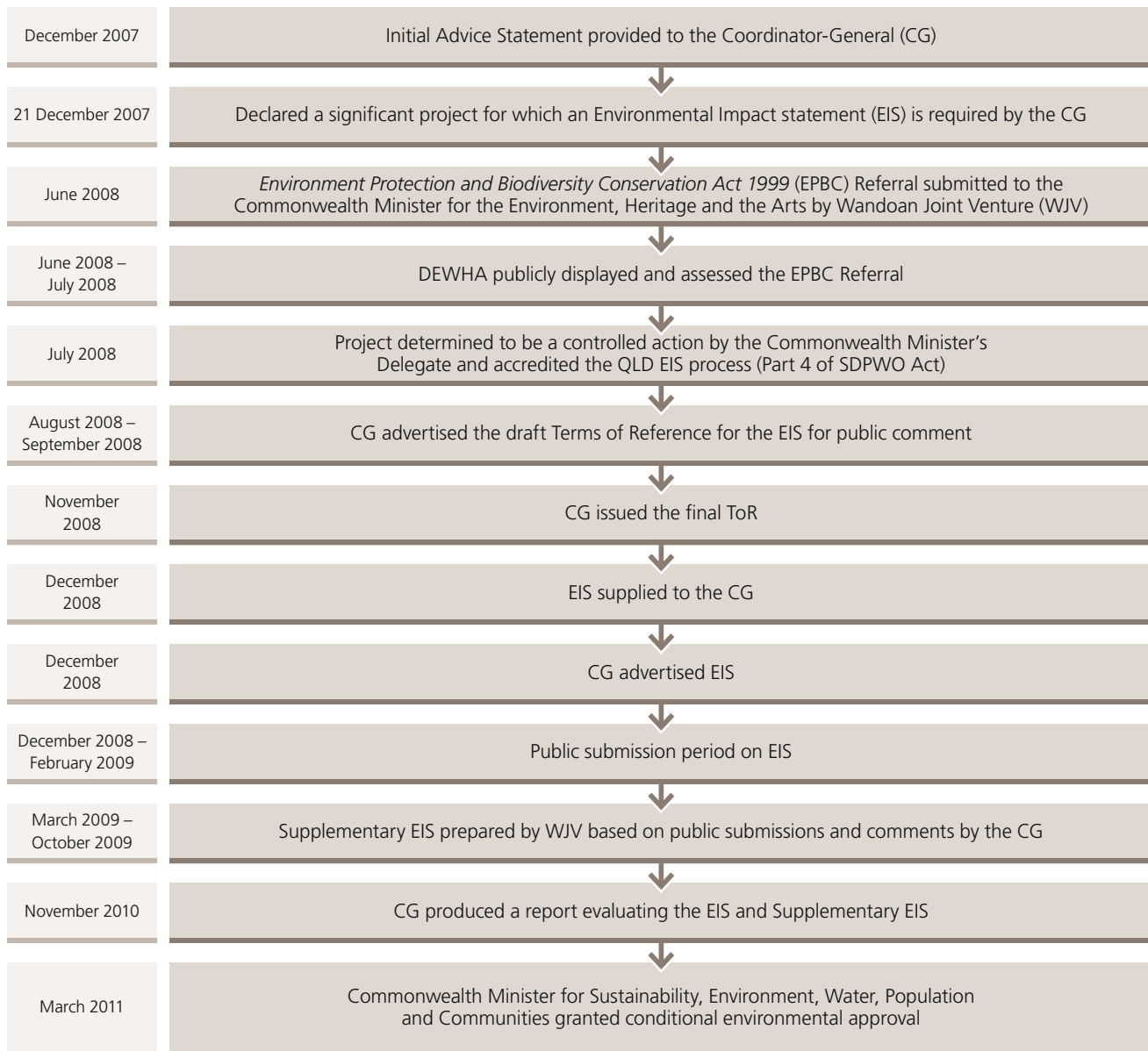
- The Queensland Minister for Natural Resources, Mines and Energy determines the Mining Lease Application.
- The Western Downs Regional Council processes development applications for any specific infrastructure located outside the mining lease.
- Construction of the Project can commence once necessary approvals and mining lease have been granted.
- Critical rail and port infrastructure must also be in place.

### Some of the key conditions for approval in the Coordinator-General's report

- Two kilometre High Management Zone between the mine and the Wandoan township where no open-cut mining will occur
- Social Impact Management Plan to monitor and manage social impacts and opportunities
- Road Use Management Plan to manage traffic issues and Road Impact Assessments developed
- Aquatic Ecosystems Monitoring Program to protect water environments
- Receiving Environment Monitoring Plan to track downstream water quality
- Groundwater Monitoring and Management to protect neighbouring water users
- Biodiversity offsets to compensate for vegetation clearing.

# Wandoan Coal Project

## Fact Sheet: About the Project approval process



### To find out more:

Talk to a member of our project team, call our free-call information line **1800 052 797**. The EIS and the Coordinator General's Report are available online at [www.wandoancoal.com.au](http://www.wandoancoal.com.au) and can be viewed at the Xstrata Coal Shopfront in Royd Street, Wandoan.

### Xstrata Coal Queensland

Level 2, 340 Adelaide St,  
PO Box 2587 Brisbane QLD 4001  
[www.xstrata.com](http://www.xstrata.com)

# About the proposed mine and supporting infrastructure



## Wandoan Coal Project Fact Sheet



Great care has been taken to minimise the potential impact of the mine and its supporting infrastructure on the surrounding community, environment and cultural heritage.

### The proposed mine site will comprise:

- 10 open-cut mining areas with 16 pits
- Coal handling and preparation plant
- Mine support infrastructure including office buildings, workshops, washdown facilities, fuel and oil storage facilities
- Workforce accommodation village
- Rail spur and train loading facilities

### Supporting infrastructure

New infrastructure will be required to support the operation of the proposed mine. The Project will assist with resources to enable Western Downs Regional Council to build new, or upgrade existing, infrastructure including:

- Upgrading Wandoan's town drinking water treatment facilities so there is enough water to meet the Project's drinking water needs, without placing increased pressure on the current local supply, with Western Downs Regional Council as the Proponent for the upgrade
- Establishing a new multi-user municipal waste facility to meet the long-term waste management needs of the Project, with Western Downs Regional Council as the Proponent for the proposed facility
- Upgrading Wandoan's sewerage treatment and wastewater disposal facilities to meet the needs of the Project's accommodation village and the expected growth in Wandoan township, with Western Downs Regional Council as the Proponent for the upgrade
- Either upgrading the Taroom Aerodrome, to be owned and operated by Banana Shire Council, or constructing a new airstrip in the Wandoan district to be operated by Western Downs Regional Council.



*The proposed mine will use draglines and truck and excavator mining methods.*

- Installing pipelines to source raw water from one of two possible water sources
- Relocating local and State roads, intersections and bridges to meet the traffic management needs of the Project and the community
- Bringing grid-supplied electricity to the mine site and/or installing a gas pipeline to bring gas to generate electricity at the mine site. Disruptions to existing power supply to occupied properties surrounding the mining areas will be minimised during any upgrade and/or relocation of power infrastructure.

### Where will raw water be sourced from?

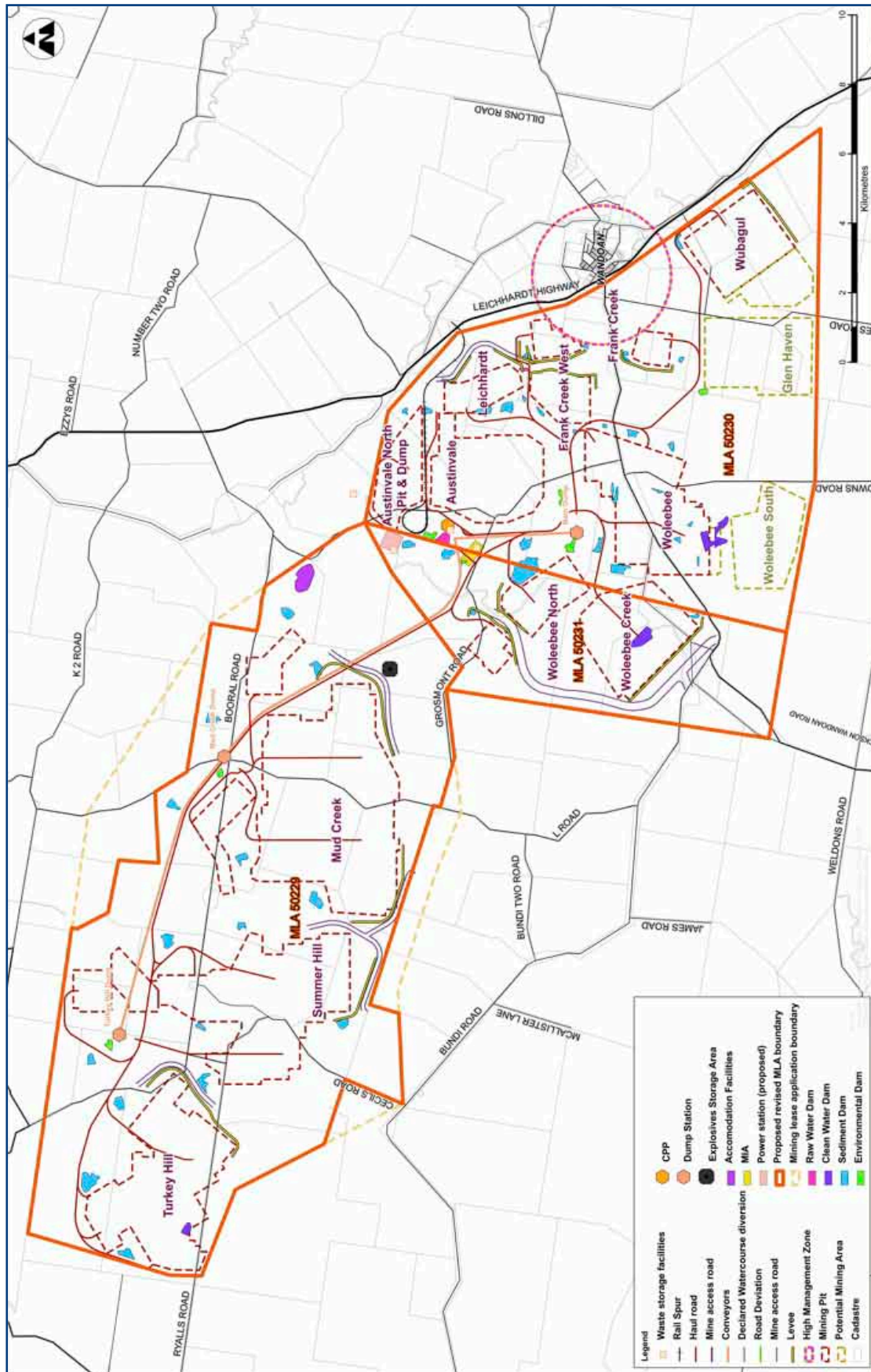
The options being considered to meet the Project's operational needs for raw water (as opposed to drinking water) include sourcing water from:

- Glebe Weir, which is proposed to be raised to accommodate the mine's demands
- Coal seam methane water.

See the Fact Sheet on water for more information on proposed raw water and drinking water sources.

# Wandoan Coal Project

## Fact Sheet: Mine and supporting infrastructure



Proposed layout of mining operations.

### To find out more:

Talk to a member of our project team, call our free-call information line **1800 052 797**. The EIS and the Coordinator General's Report are available online at [www.wandoancoal.com.au](http://www.wandoancoal.com.au) and can be viewed at the Xstrata Coal Shopfront in Royd Street, Wandoan.

### Xstrata Coal Queensland

Level 2, 340 Adelaide St,  
PO Box 2587 Brisbane QLD 4001  
[www.xstrata.com](http://www.xstrata.com)

# How we will manage and reduce impacts on Flora and fauna



## Wandoan Coal Project Fact Sheet



We are committed to managing and reducing our impacts on the local environment. The Wandoan Coal Project will manage operations with consideration for the flora, fauna and waterways that exist in and around the proposed mine site and its associated infrastructure.

### Managing biodiversity

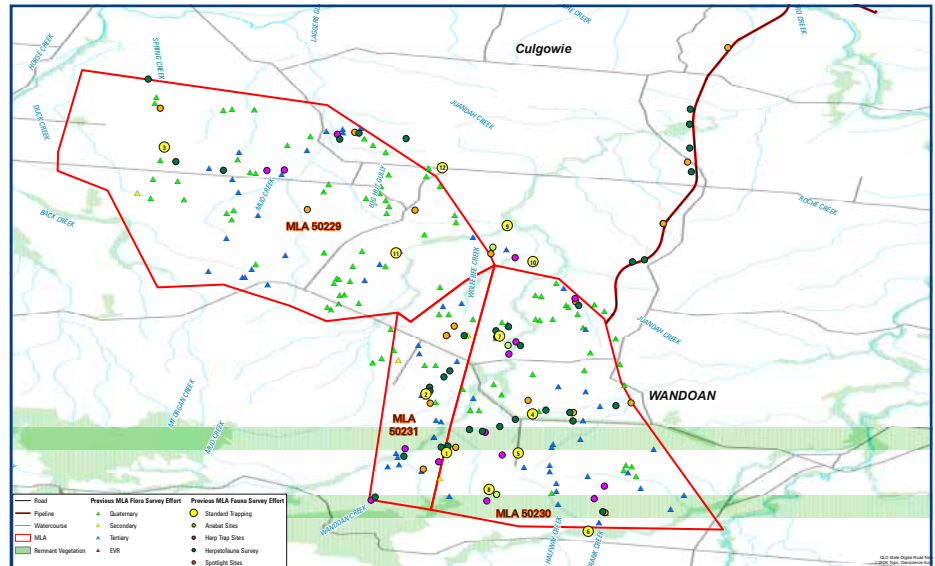
Prior to construction of the mine, a comprehensive Biodiversity and Land Management Plan will be developed outlining how we will care for and protect local flora and fauna during the construction and operational phases of the Project.

The plan will include:

- Using a qualified ecologist to carefully identify fauna which live in the areas that will need to be cleared and relocating them to a safe place that is similar in habitat
- Protecting local untouched habitats outside the mining lease that are similar to the land on which the mine will be located (an offsets program).
- Progressively rehabilitating and restoring habitats post-mining to maintain local wildlife
- Establishing best-practice mitigation measures such as fauna underpasses, overpasses and fencing to protect local animals
- Introducing a Feral Animal Management Program to help safeguard local wildlife
- Introducing a Weed Management Program that includes vehicle wash down procedures to limit the spread of weeds and herbs.

#### Biodiversity Offset Strategy

The Project will clear remnant and non-remnant vegetation, however within the mining lease application areas 82% of remnant vegetation and 53% of non-remnant vegetation will be retained.



*Threatened species and ecological communities are sparsely distributed within the proposed mine area due to historical clearing for farming and grazing.*

The Coordinator-General has conditioned that the Project prepare a Biodiversity Offset Strategy for approval by the Queensland Department of Environment and Resource Management and the Australian Department of Sustainability, Environment, Water, Population and Communities prior to the commencement of mining operations.

In consideration of the size, location, ecological integrity, protection status, local/regional significance and connectivity of regional ecosystems proposed to be cleared, the following minimum offset ratios are recommended to apply to all components of the Project:

- Zero offsets for 'least concern' regional ecosystems (*Vegetation Management (VM) Act 1999 (Qld)* status) or 'no concern at present' regional ecosystems (Biodiversity status)
- 1:2 offsets for 'of concern' regional ecosystems (VM Act status and/or Biodiversity status)
- 1:3 offsets for 'endangered' regional ecosystems (VM Act status and/or Biodiversity status).

### Protecting local aquatic ecosystems

The Project's impacts on aquatic ecosystems are unlikely to be significant, provided that proposed mitigation measures are implemented. However, the Coordinator-General has conditioned that an Aquatic Ecosystem Monitoring Program be designed and implemented.

### Greenhouse gas emissions

The Coordinator-General has conditioned the Project to develop and implement a Greenhouse Gas Reduction Management Plan in relation to the Scope 1 and Scope 2 emissions, including a policy on greenhouse gas emissions, annual monitoring of emissions, an Energy Management Plan covering energy efficiency and emissions control, and a Fugitive Gas Management Plan.

### Protecting local landscapes

The comprehensive Biodiversity and Land Management Plan will outline how local landscapes will be managed during the construction and operational phases of the proposed mine.

Measures have been incorporated into the Project to mitigate long-term impact on the land and allow the return of land to its pre-mining use. These measures include:

- Mining and rehabilitation will be undertaken progressively so unmined land will remain suitable for agriculture and rehabilitated mine land will again become suitable for grazing during the life of the mine
- Design of post-mining landform will attempt to replicate the terrain that occurs naturally in the area
- Undisturbed land will be returned to, or retained in, its pre-mining land suitability class
- Tailings will be disposed of in mined-out pits and covered so no unrehabilitated tailings dam sites are planned in the final landform

### Progressive rehabilitation of mining land

We will work with the local community and Government to plan for the responsible return of mining land to pasture or bushland.

Rehabilitation will be undertaken progressively so mined land will become suitable for these purposes as mining operations in an area come to an end. Rehabilitation will return mined areas and adjoining habitat, as much as possible, to pre-mining conditions using native vegetation and original pasture species.

### Design of post-mining landform

The design of the post-mining landforms will replicate as much as possible, the two main terrain elements of the Wandoan district: the alluvial floodplains and low undulating hills.

While the topography can not be returned to the pre-mining profile, post-mining landforms will be constructed to a similar height, slope-angle and shape as occurs naturally in the area. Floodplains formed as part of the final landform will be of similar width and slope to those in the area pre-mining, as far as possible.

These measures can be described generally as:

- Concave slope profiles
- Slope gradients of up to 15% other than in final voids (see over for more detail)
- Irregular hill shapes (e.g. with uneven heights, ridgelines and spurs)
- Hill height of approximately 50 metres between the floor of the floodplain and the hill crest.

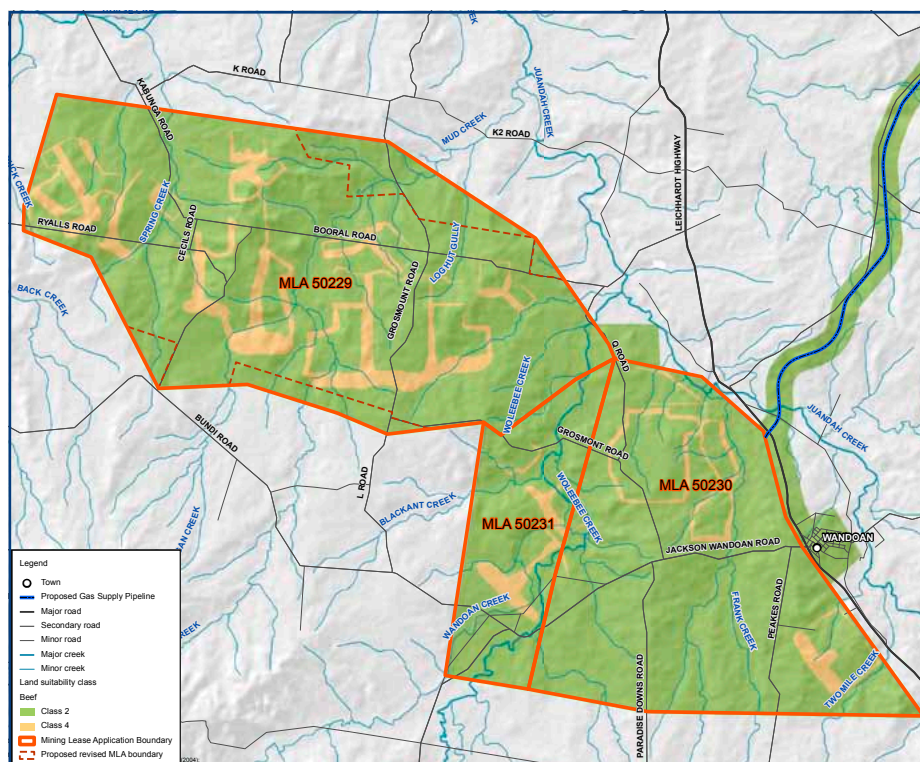
### Post mining land use classifications

The Project will aim to minimise the change to land suitability classes that results from mining and ensure that the post-mining landform is stable, safe and sustainable. It is expected that the limitations of post-mining land use will broadly be:

- Land used for infrastructure components of the Project such as roads and workshops will have usage limitations related to water availability through compaction and breakdown of the subsoil structure. Where possible, this land will be returned to Class 3 cropping land or Class 2 grazing land, otherwise it will be returned to Class 4 cropping land or Class 3 grazing land.
- Overburden stockpiles will have usage limitations related to water availability, salinity, gradient, erosion and nutrient content. Flatter gradient sections of overburden stockpiles will be returned to Class 4 cropping land or Class 2 grazing land where possible. Steeper gradient overburden slopes will be returned to Class 5 cropping land or Class 4 grazing land.
- Final voids will be reshaped to reduced gradients, will have limitations similar to those listed for overburden stockpiles and will also be Class 4 for cattle grazing or Class 5 for cropping.

### Strategic Cropping Land

In August 2010, the Queensland Government released a new policy framework for Strategic Cropping Land (SCL) to demonstrate its commitment to protecting Queensland's best cropping land. While the policy framework and draft trigger maps were available for public comment, the criteria for identification of SCL had not been developed. The extensive land suitability assessments that were undertaken as part of the EIS process concluded the mining lease application areas are land suitability Class 3 and Class 4.



Post-mining land suitability for cattle grazing.

### To find out more:

Talk to a member of our project team, call our free-call information line **1800 052 797**. The EIS and the Coordinator-General's Report are available online at [www.wandoancoal.com.au](http://www.wandoancoal.com.au) and can be viewed at the Xstrata Coal Shopfront in Royd Street, Wandoan.

### Xstrata Coal Queensland

Level 2, 340 Adelaide St,  
PO Box 2587 Brisbane QLD 4001  
[www.xstrata.com](http://www.xstrata.com)

# How we will manage and reduce impacts on Water



## Wandoan Coal Project Fact Sheet



### Keeping local waterways healthy

A detailed Water Management Plan will be developed and implemented to ensure the health of the waterways located in and around the mine site during the construction and operational phases of the Project.

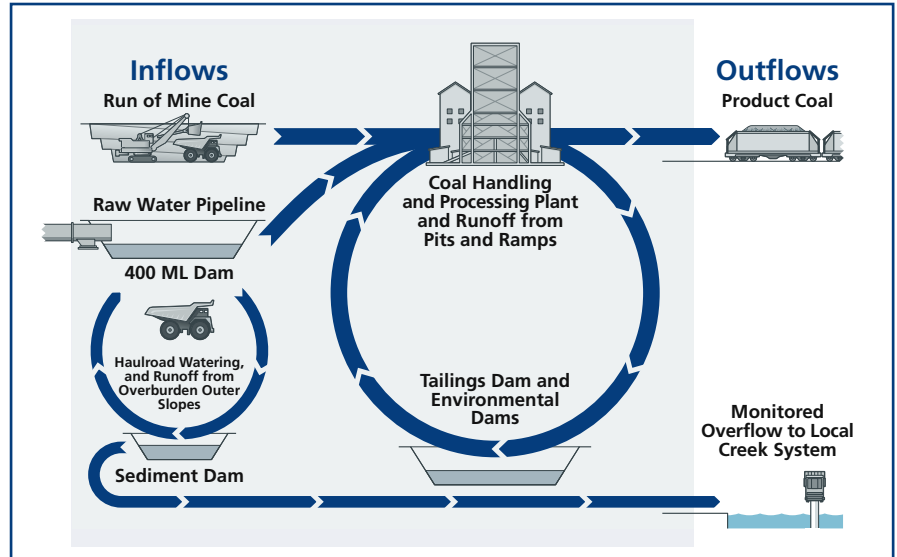
The plan will include:

- Monitoring the quality of local watercourses and identifying potential impacts requiring mitigation
- Ongoing surface and groundwater monitoring and management to minimise the mine's impact on the surrounding environment and on other water users
- Establishing a Site Water Management System that aims to:
  - avoid discharge of water from mine operations or water that collects in the pits by capturing, reusing and permanently containing that water
  - allow planned discharge of mine-affected runoff water only after it is collect and treated in sediment dams
  - allow discharge of non-affected runoff water
- The Site Water Management System consists of:
  - raw water dams to store incoming raw water and recycle it for all mine operations
  - environmental dams to capture and permanently contain water from mine operations
  - tailings dams to capture and permanently contain mine tailings
  - sediment dams to capture and treat all mine-affected runoff water
  - monitoring to ensure no unauthorised discharges from the mine-site occurs

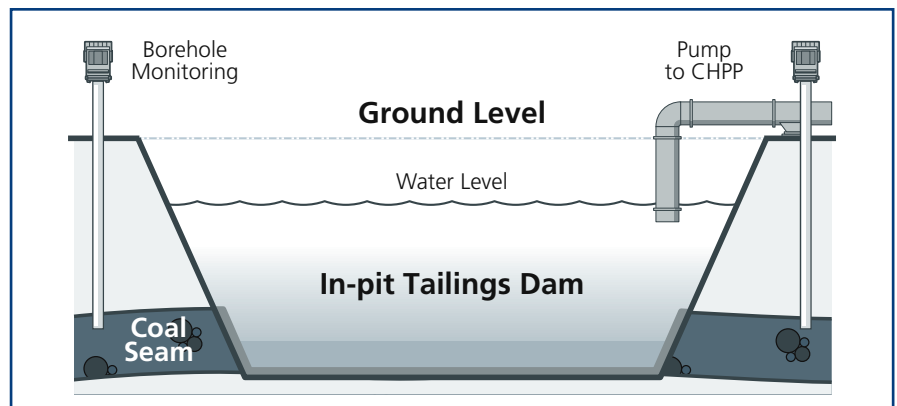
All discharges of water from the mine site will be planned and authorised before they occur by the Department of Environment and Resource Management.

### Receiving Environment Monitoring Program

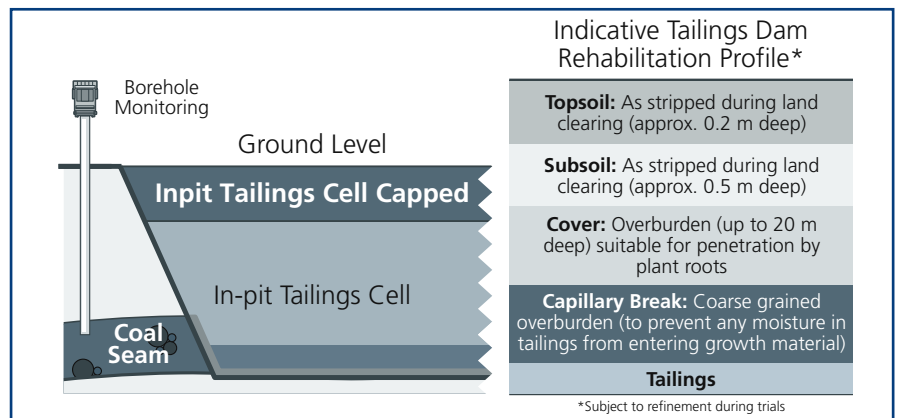
As part of the Site Water Management System, the Coordinator-General requires the Project to prepare a Receiving Environment Monitoring Program, which will monitor water quality and quantity in the waterways surrounding and within 10 kilometres downstream of the Project.



The Site Water Management System consists of raw water dams, environmental dams, sediment dams and tailings dams, as well as constant monitoring systems.



During operations tailings dams within old pits are used to capture and permanently contain mine tailings and recycle raw water to the Coal Handling Plant.



After operations, tailings are covered with up to 20 metres of overburden and top soil and rehabilitated. No unrehabilitated tailings dam sites are expected in the final landform.

### Sourcing raw water during construction

The Project needs raw water (as opposed to drinking water) during the two to three years of construction, for activities such as construction works and dust suppression.

During construction the Project will have a total raw water demand of approximately 700 megalitres (ML).

The Project's water studies have found that a large proportion of the raw water needed during construction could be sourced from existing surface water dams. During construction, the Project will first use non-Great Artesian Basin (GAB) sources for raw water, including existing surface water dams, production bores in coal seams and existing farm water bores that do not tap the Great Artesian Basin.

The Project's water studies have found that the most reliable potential raw water source for construction is the Precipice Sandstone aquifer of the Great Artesian Basin. The Project proposes to establish a new bore into the Precipice Sandstone at a site within the mining lease application area adjacent to the Jackson-Wandoan Road. This bore will become a backup source for raw water during construction, to be used as a last resort if required. It will then be handed over to the Western Downs Regional Council to be used as a third potable town water supply bore in conjunction with the Council's two existing bores.

### Sourcing raw water during operations

The Project needs raw water (as opposed to drinking water) during operations for activities such as coal washing, dust suppression and use in the workshops.

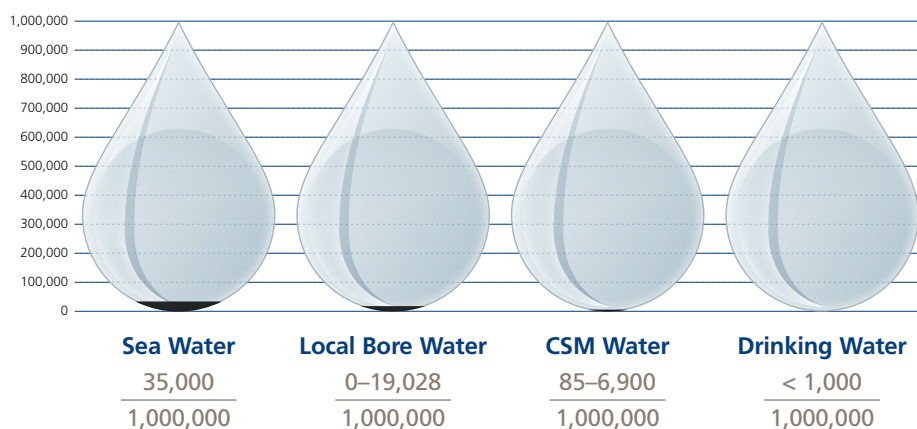
During operations the Project will need approximately 9,100 ML per year of raw water.

The options still being considered to meet the Project's operational raw water needs include sourcing water from:

- The Glebe Weir on the Dawson River, which is proposed to be raised to accommodate the mine's demands
- Coal Seam Methane water from the vicinity of the new Condamine Power Station around 100 kilometres south of Wandoan.

The Project's raw water needs during operations will not be sourced from the Great Artesian Basin.

### Total Dissolved Solids – Parts per Million



The Project is considering meeting its raw water needs by sourcing CSM water that contains less than 4,000 parts per million total dissolved solids.

### Coal Seam Methane water

Coal Seam Methane (CSM) water is a by-product of the production of coal seam methane gas. The water is typically saline, but these dissolved solids can be removed through reverse osmosis.

The Project is considering meeting its raw water needs by sourcing CSM water that contains less than 4,000 parts per million total dissolved solids.

By comparison, drinking water contains less than 1,000 parts per million, bore water up to 19,000 and sea water over 35,000 parts per million.

Studies undertaken for the Supplementary EIS have found that using CSM water that contains less than 4,000 parts per million total dissolved solids on the mine site will not detrimentally affect mining operations or the ability to rehabilitate the land.

All raw water, including any CSM water, used on the mine site will be managed through a Site Water Management System that includes a raw water dam for storing and recycling raw water, and environmental and sediment dams for collecting and treating runoff water.

### Sourcing drinking water

The Project proposes to source drinking water for construction and operation of the mine from Wandoan's town drinking water. The Project proposes to fund an upgrade of Wandoan's town drinking water treatment facilities so there is enough water to meet the drinking water needs of the Project and the

growing population, without placing increased pressure on local supply. This will include establishing a new town bore into the Great Artesian Basin.

The Wandoan township and the Project combined will need approximately 350 ML of drinking water per year.

During construction of the mine (before completion of the pipes bringing drinking water from Wandoan township to the mine site), the Project proposes to source drinking water from either existing bores or from on-site surface storage.

### Groundwater monitoring and management

The Project has commenced groundwater monitoring, with seasonal variations in the aquifers being established. The Coordinator-General has conditioned the Project to supply groundwater results to the Queensland Department of Environment and Resource Management prior to commencement of mining activities. To ensure that the Project does not result in undue impact on the availability and quality of groundwater supplies to neighbouring landholders, the Coordinator-General has conditioned the Project to reach mutually agreeable arrangements with landholders potentially affected by groundwater drawdown.

#### To find out more:

Talk to a member of our project team, call our free-call information line **1800 052 797**. The EIS and the Coordinator-General's Report are available online at [www.wandoancoal.com.au](http://www.wandoancoal.com.au) and can be viewed at the Xstrata Coal Shopfront in Royd Street, Wandoan.

#### Xstrata Coal Queensland

Level 2, 340 Adelaide St,  
PO Box 2587 Brisbane QLD 4001  
[www.xstrata.com](http://www.xstrata.com)

# How we will manage and reduce Noise, dust and vibration



## Wandoan Coal Project Fact Sheet



Xstrata Coal takes its responsibility for the local environment very seriously and will implement leading management practices and standards to minimise and manage any potential impacts from dust, noise and vibration.

### Managing noise

If the Project proceeds, an extensive noise monitoring and mitigation program will be implemented during construction and operation of the mine and its associated infrastructure.

This program will include:

- Developing and implementing a comprehensive noise monitoring program
- Regularly maintaining machinery to minimise noise
- Where possible, using machinery that is designed to be quieter
- Storing and starting-up equipment as far as possible from residential areas
- Providing a free-call hotline for residents to report noise concerns
- Where appropriate, installing temporary structures or screens to limit noise.

### Caring for the air

As the Coordinator-General's report states, an extensive Air Quality and Dust Management Plan will be developed to reduce the potential impact of construction activity and ongoing operations on air quality.

This plan will include:

- Developing and implementing a comprehensive air quality monitoring program
- Introducing on-site dust management procedures which will include the use of water trucks, wheel washers, road sweepers and dust suppressants
- Regularly monitoring the weather to direct operations and reduce the impacts of dust and noise on the local community
- Introducing dust suppression techniques on stockpiles



Above left: An air quality monitoring station will regularly check air quality in and around the mine site.  
Above right: Blast monitoring stations will be installed to measure ground vibration.



- Regularly maintaining equipment
- Progressively revegetating disturbed areas
- Providing a free-call hotline for residents to report concerns.

The Coordinator-General has conditioned the Project that dust generated by mining activities must not exceed air quality objectives at a sensitive place:

- a level of deposited dust of 120 milligrams per square metre per day based on a monthly average
- a concentration of total particulate matter suspended in the atmosphere of 90 micrograms per cubic metre over a one year averaging time.

The Coordinator-General has conditioned the Project to take all reasonable and practicable measures to limit the concentration of particulate matter generated by the mining activities with an aerodynamic diameter of less than 10 micrometres, to:

- 50 micrograms per cubic metre suspended in the atmosphere over a 24 hour averaging time with not more than five exceedences recorded over 12 months at any sensitive place.

### Reducing vibration

A detailed Blast Management Plan will be developed to prevent potential vibration impacts that may occur as a result of the mine's blasting activity.

This plan will include:

- Regularly undertaking vibration monitoring
- Notifying residents of the mine's blasting operations well in advance of blasting events

- Where necessary, using trucks or excavators to replace the need for blasting activities
- Where requested by building owners, undertaking conditional surveys of buildings and structures within two kilometres of potential blasting activities.

### Product transport related air quality

As the Coordinator-General's report states, the Project will supply coal for rail transport processed through a coal handling and processing plant, with a coal surface water content designed to reduce dust emissions during rail transport.

It will also profile the surface of coal in wagons to a flat 'garden bed' shape and use overloading controls to prevent wagon overloading and minimise the loss of coal during transport.

### High Management Zone for two kilometres around Wandoan township

The Wandoan Coal Project has identified a two kilometre zone measured from the Wandoan Post Office that will become a High Management Zone. The Coordinator-General has conditioned the Project that no open-cut mining will occur within that Zone. Activities other than open-cut coal extraction, including for example, roads, pipelines and powerlines will not be excluded.



# We will work with you to manage and reduce impacts on Roads, heritage and visual amenity

## Wandoan Coal Project Fact Sheet



Xstrata Coal is committed to making a real and positive difference in the communities in which we operate. We take our responsibility for working with the community very seriously and will implement leading management plans to minimise any potential impacts from the proposed mine.

### Reducing visual impacts

While the mine's pits and associated infrastructure will be large, they will not be highly visible from outside the mine site.

A natural ridge line between the mine area and Wandoan township will obscure the view of the mine from the town.

However, some rural homesteads and areas of the Leichhardt Highway adjacent to the mine will have views of the mining operations. While some of these views will be ongoing throughout the life of the mine, visual and landscape mitigation strategies such as vegetation screening will be implemented where necessary to reduce impacts both in the short and long term.

The Coordinator-General has recommended the Project achieve a specified level of revegetation of all elevated spoil areas that are visible from key viewpoints on the Leichhardt Highway, Nathan Road and the Jackson-Wandoan Road, within three years of completion of placement of spoil in those areas.

### Protecting and preserving local heritage

The Project recognises the importance of local indigenous and non-indigenous cultural heritage and is committed to working with the local community to protect and preserve this important history.

A Cultural Heritage Management Plan will be developed to assist in surveying work areas to identify and protect cultural heritage prior to any activities taking place.



*The natural ridge line will obscure the view of the mine from the town.*

Through our work with the local community, the following initiatives have been identified and will be implemented as part of the Project:

- Undertaking, if feasible, a structural and architectural heritage assessment of the Booral homestead and an historic meat shed, located in the proposed mine area
- If structurally sound, the homestead and shed may be sympathetically reused or safely relocated.

### Road relocations and closures

There will be some road closures and relocations once construction of the proposed mine commences and at different stages during the life of the proposed mine. It is proposed that roads currently running through the mining lease application area will be kept open for use by the public for as long as possible and will only be closed or relocated once it is necessary for the implementation of the mine plan.

A new mine access road will be built which will intersect the Leichhardt Highway approximately six kilometres to the north of the Wandoan township. The mine access road will provide safe traffic movement to and from the mine site and connect the accommodation facilities with the mine infrastructure area.

Two local bridges, at One Arm Man Creek and Woleebee Creek, will be upgraded and reconstructed. After extensive consultation with the community the proposed road closure timing is outlined in the table on the next page.



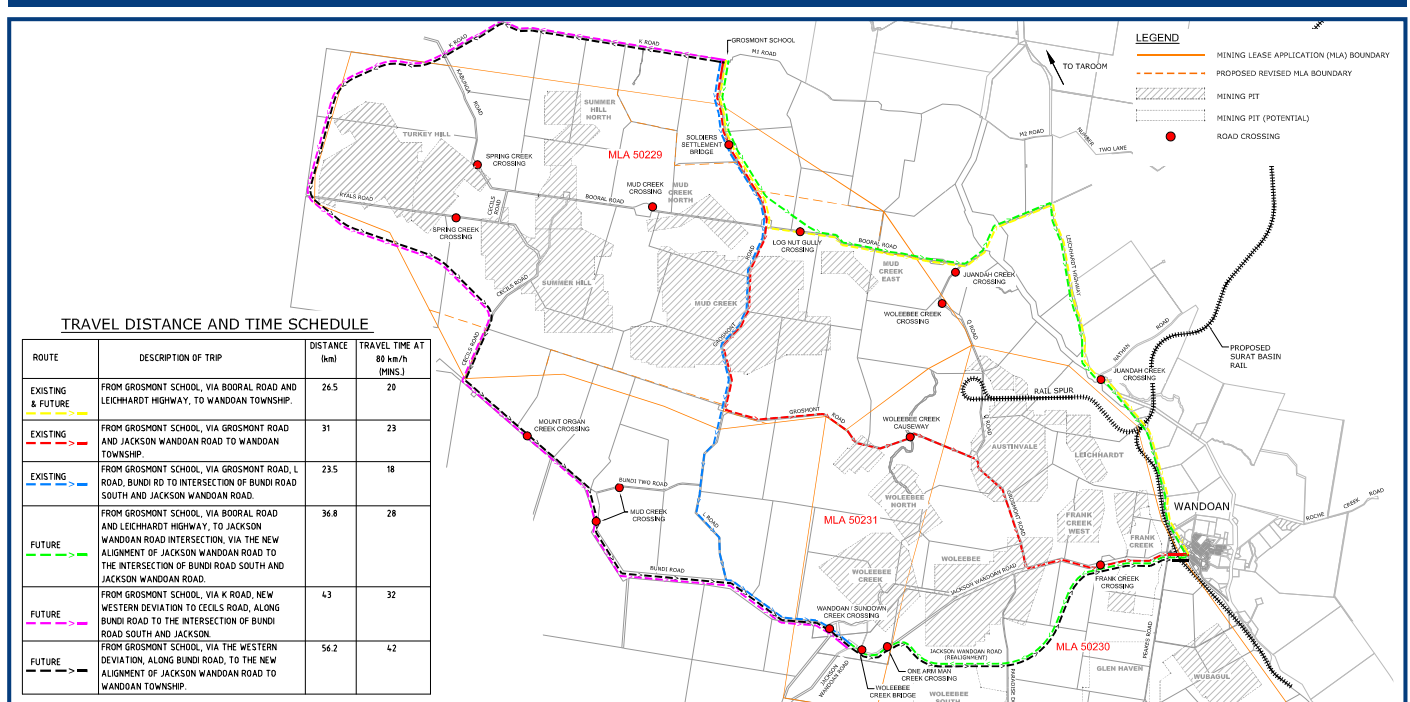
*Predicted view of the proposed mine site from the Leichhardt Highway in year 30 of mine operations.*

### Road Impact Assessment and Management

As the Coordinator-General's report states, prior to the commencement of any significant construction work the Project will:

- Review and finalise the road impact assessment, undertaking two joint road asset condition assessments – prior to and at the completion of construction – to determine any additional maintenance required to restore road networks to the original condition
- Prepare a Road Use Management Plan for state-controlled and other roads detailing volumes, routes, dust control, road safety, and maintenance or upgrades to mitigate impacts, as well as management of workforce movements associated with the Project
- Enter into agreements with the Department of Transport and Main Roads and local councils to contribute to any necessary road maintenance and upgrades identified in the Road Use Management Plan
- Prepare detailed Traffic Management Plans for all construction and other activities on state-controlled and local roads
- Construct roads providing access to accommodation facilities to an all-weather access standard, with appropriate turning facilities from major roads.

# Wandoan Coal Project Fact Sheet : Roads, heritage, and visual amenity



There will be some road closures and relocations once the construction of the mine begins and at different stages during the life of the mine .

## Commercial vehicle activity during construction and operations

During the construction and operation of the mine there will be some increase in commercial and heavy vehicle activity on the regional road network\*, but the increase is expected to be less than 5% of existing traffic levels.

As the Coordinator-General's Report states, the Project will develop a comprehensive Traffic Management Plan for the State controlled roads and the local road network affected by mine activity, in consultation with State, regional and local authorities. This plan will ensure the safety of the community, road users and our people. It will also help to minimise traffic disruption and will consider school bus routes.

## Workforce vehicle activity during construction

During construction of the mine there will be a significant increase in workforce vehicle activity on the regional road network\* of greater than 5% of existing traffic levels, but this will occur only at the change of shift, around every 10 days.

Construction workers will organise their own travel from their hometowns to the accommodation facilities at the change of shift, around every 10 days. This will create a significant increase in traffic along Leichhardt Highway between Warrego Highway and Capricorn Highway but this impact will not be a daily occurrence and should only be experienced on shift change days. These movements will be planned to occur at staggered times. As the Coordinator-General's report states, the Project will investigate providing fatigue and road safety training and awareness programs.

To minimise workforce vehicle activity during construction, by bus workers will be transported on a daily basis from the accommodation facilities at the north of the mine, along the mine access roads to the mine construction site and back again.

## Workforce vehicle activity during operations

During mine operation there will be some increase in workforce vehicle activity on the regional road network\*, but the increase is expected to be less than 5% of existing traffic levels.

To minimise workforce vehicle activity during operations, shuttle buses will be provided for employees travelling daily from the towns of Wandoan, Taroom and Miles.

The Project is considering both air and coach transport options for employees travelling from other major regional centres at the change of shift, around every seven days.

## Pavement impact during construction and operations

During the construction and operation of the mine significant pavement impacts (in excess of 5%) are predicted along the Leichhardt Highway between its intersection with the Warrego Highway and the new mine access road.

As the Coordinator-General's Report states, the Project will undertake early consultation and negotiations with the Department of Transport and Main Roads and Western Downs Regional Council to reach a suitable agreement to contribute to any necessary road maintenance and upgrades identified in the Road Use Management Plan.

\*The EIS investigated the impact of the project's commercial vehicle activity during construction and operations on the regional road network including: Leichhardt Highway; Jackson-Wandoan Road; Warrego Highway; Dawson Highway; Roma-Taroom Road; Capricorn Highway; Fitzroy Developmental Road; and Dysart-Middlemount Road.

## To find out more:

Talk to a member of our project team, call our free-call information line **1800 052 797**. The EIS and the Coordinator-General's Report are available online at [www.wandoancoal.com.au](http://www.wandoancoal.com.au) and can be viewed at the Xstrata Coal Shopfront in Royd Street, Wandoan.

## Xstrata Coal Queensland

Level 2, 340 Adelaide St,  
PO Box 2587 Brisbane QLD 4001  
[www.xstrata.com](http://www.xstrata.com)

# We will work with you to manage and reduce impacts on Housing and social services



## Wandoan Coal Project Fact Sheet



Xstrata Coal is committed to making a real and positive difference in the communities in which we operate. We take our responsibility for working with the community very seriously and will implement leading management plans to minimise any potential impacts from the Wandoan Coal Project.

<b>844</b> total mine-related personnel		
<b>90</b> contractors	<b>754</b> permanent operational employees	
<b>90</b> on site	<b>600</b> on site in accommodation village	<b>150</b> workers living locally

### Potential increase in population and housing demand

The Wandoan Coal Project, once operational, is expected to create 844 jobs on the mine site, of which 754 will be permanent operational employees. At similar Xstrata operations in Queensland around 20% of our employees live locally and go home to their families after work every day. This would equate to around 150 employees who might live in and around Wandoan, Miles and Taroom.

Once the mine is operational it is projected to create an additional 150 to 200 flow-on jobs in the local area. In total it is projected that the population of the Wandoan township will increase by approximately 380 people.

Studies of the current housing vacancy rate in Wandoan township indicate that this growth in population will take up the current available housing, causing demand for housing to outstrip supply and impact housing affordability.

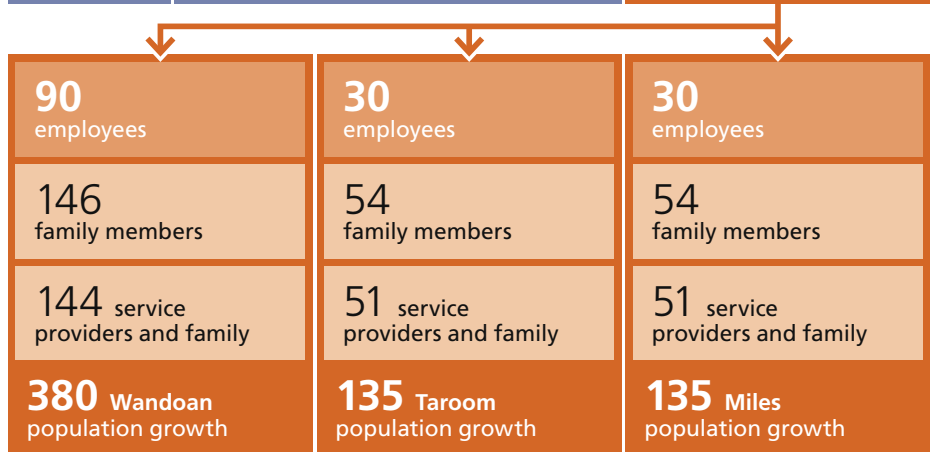
### Accommodating the proposed mine's workforce

If the Project proceeds, Xstrata Coal will implement a series of specific accommodation and infrastructure plans to manage the impacts of the expected increase in the local population.

These plans will be developed in consultation with local councils, taking into consideration community feedback regarding the potential need for increased local services.

Current plans include:

- Implementing protocols that clearly outline the behaviour expected from our workforce



The population of Wandoan township is expected to grow by approximately 380 people once the proposed Wandoan Coal Project is operational.

- Building a permanent, fully-serviced accommodation village on or adjacent to the mining area to house the majority of our operational workforce
- Constructing 15 new houses and 10 duplexes in Wandoan to house 35 of our staff members, some with families
- Offering local housing purchase assistance to permanent employees to encourage them to purchase or build local residences after commencing employment at the mine
- Caravan parks, hotels and motels will not be used for the long-term accommodation of personnel, once the Project is operational.
- Covered carparks in close proximity to each accommodation unit and the circulating roadway
- Service areas including dining rooms, laundries and kitchen
- Recreational facilities including a recreation room, covered barbeque areas, swimming pool, grass and landscaping
- Security features including external lighting to the buildings, walkways and carpark, security fencing and covered walkways
- All services including internal reticulation of water, power, sewerage, public phones.

As stated in the Coordinator-General's report, the Project will treat the proposed permanent accommodation facility as a sensitive place for air quality, noise and vibration monitoring and control.

### Accommodation village

The permanent, fully-serviced accommodation village will contain:

- Generous single accommodation units that include ensuites, living areas, kitchenettes, air-conditioning, TV and communications connections



Accommodation facilities will house some employees on the mine site, others will live locally with their families.

### Commitment to measuring and managing social impacts

A comprehensive Social Impact Management Plan (SIMP) will be developed for the Project in consultation with the community, Western Downs Regional Council and the Queensland Government, for implementation once construction of the mine is approved by all parties. This plan will include:

- Ongoing community consultation and communication processes to keep the community informed of Project activities and provide for community feedback to Xstrata Coal
- A community visioning process that involves the community in determining their future goals and aspirations for the Wandoan township that will inform the objectives of the Plan and the priority of initiatives
- A social issues and project impact monitoring process that involves the community in identifying social issues and project impacts to be monitored
- Initiatives for managing social issues identified through the monitoring process, that are developed in conjunction with:
  - local health providers and government agencies to plan for future health service needs
  - local education, training and enterprise development providers and government agencies to plan for future education needs
  - local community service providers to ensure appropriate levels of community services continue to be available within local and regional areas
  - the Queensland Police and other emergency services, particularly in relation to traffic management and associated road safety issues
- A local health study
- A local housing study to monitor demand and supply of housing
- Initiatives and policies for business opportunities and economic development during both construction and operations, to encourage participation by local business in opportunities generated by the Project
- Initiatives and policies for employment and training to encourage participation by local job-seekers in employment and training opportunities generated by the Project
- Initiatives and policies to encourage engagement of employees in the local community through community initiatives and volunteering
- Donations and sponsorships from the Xstrata Coal Wandoan Community Fund to grassroots community organisations in Wandoan, Taroom and Miles
- Major donations from Xstrata Coal's global Corporate Social Involvement program, including a partnership with Queensland Health to redevelop the primary health care facilities in Wandoan and a partnership with Education Queensland to bring a range of enriched curricular programs to Wandoan and Taroom State Schools and Miles High School
- A Complaints Management System to track and report on complaints, address issues causing complaints and ensure appropriate follow up and resolution with complainants
- Behaviour protocols for employees, as part of a robust site induction process, including employee sign-off, covering after-hours behaviour, travel and driving, and interactions with the community
- Employment of appropriately experienced community engagement staff
- Key performance indicators to measure the plan's implementation
- Internal and external review processes, based on surveys, consultation with local communities and local service providers.

The Wandoan Coal Project will conduct community and stakeholder consultation on the draft SIMP and the final SIMP will be submitted to the Coordinator-General for approval within six months of the release of the Coordinator-General's report.

#### To find out more:

Talk to a member of our project team, call our free-call information line **1800 052 797**. The EIS and the Coordinator-General's Report are available online at [www.wandoancoal.com.au](http://www.wandoancoal.com.au) and can be viewed at the Xstrata Coal Shopfront in Royd Street, Wandoan.

#### Xstrata Coal Queensland

Level 2, 340 Adelaide St,  
PO Box 2587 Brisbane QLD 4001  
[www.xstrata.com](http://www.xstrata.com)

# How we will contribute to your community

## Wandoan Coal Project Fact Sheet



We are committed to making a positive and meaningful contribution to the communities in which we operate.

Xstrata was recognised for the fourth year for 2010–11 as the leading company in the mining sector in the Dow Jones Sustainability Index for our contribution to the economies, communities and environments in which we work.

Our approach to working in the Wandoan region will be no different. We will work with the community to ensure the impact from the Project is a positive one. Our commitment will go beyond building and maintaining infrastructure that benefits the community and our Project; it extends to supporting local community initiatives.

### Improved local facilities

The Wandoan Coal Project presents an excellent opportunity for economic development and improvement of local facilities within the region. These include:

- Upgrading Wandoan's town drinking water treatment facilities so there is enough water to meet the drinking water needs of the Project and increased town population, without placing increased pressure on the current local supply, with Western Downs Regional Council as the Proponent for the upgrade
- Developing of a new multi-user municipal waste facility to meet the long-term waste management needs of the Project, with Western Downs Regional Council as the Proponent for the proposed facility
- Upgrading Wandoan's sewerage treatment and wastewater disposal facilities to meet the needs of the Project's accommodation village and the expected growth in Wandoan township, with Western Downs Regional Council as the Proponent for the upgrade
- Contributing to a new multi-user weed washdown facility at Wandoan, constructed, owned and operated by Western Downs Regional Council as the Proponent of the proposed facility
- Either upgrading the Taroom Aerodrome, to be owned and operated by Banana Shire Council, or contributing to a new airstrip in the Wandoan district.



### Improved local services

The Wandoan Coal Project presents an excellent opportunity for economic development and improvement of local services within the region, including:

- Opportunities for employment, education and training, including school based traineeships and apprenticeships, through the Project and associated economic development
- The Project's annual contributions to Western Downs Regional Council will help pay for a wide range of services to benefit the local community
- The Project's stimulus to economic development and private sector investment in the Wandoan region will bring an increase in the number and type of businesses providing services in the region.

### Xstrata Coal Wandoan Community Fund

The region will also continue benefit from the Xstrata Coal Wandoan Community Fund, established to provide support to the local community in the areas of health, education, environment, social and community development, enterprise and job creation, and arts and culture.

Since 2009, the Xstrata Coal Wandoan Community Fund has contributed over \$180,000 to local community groups in the Miles, Taroom and Wandoan areas to support community initiatives.

### Xstrata Coal's global Corporate Social Involvement program

#### Wandoan Education Partnership

The Xstrata Coal QMEA Wandoan Education Partnership between Xstrata Coal, Queensland Department of Education and the Queensland Minerals and Energy Academy will provide \$720,000 over three years for funding, equipment, curricula enrichment and school-industry liaison to Wandoan and Taroom State Schools and Miles High School.

For more details see the QMEA fact sheet on the publications page of our website.

#### Wandoan Health Partnership

The Xstrata Coal Wandoan Health Partnership between Xstrata Coal and Queensland Health will provide \$750,000 over three years for Wandoan Outpatients Clinic capital works with the aim of delivering improved primary healthcare services to the Wandoan township. This partnership will provide improved infrastructure from which to deliver community and clinical services and retention of dedicated, qualified nursing staff.

# How we will contribute to your local economy

## Wandoan Coal Project Fact Sheet



The Wandoan Coal Project has the potential to provide significant opportunities for the surrounding communities and Queensland economy, through its potential for new employment, infrastructure improvements, Government royalties and flow-on effects to businesses in the local Taroom, Wandoan and Miles areas.

### Jobs and spending during construction

#### More jobs

It is expected that during construction of the proposed mine up to 1,300 jobs will be created and there will be a flow-on effect that will generate up to 210 additional jobs in the local region.

#### Money being spent in the region

It is anticipated that on average between \$10 million and \$14 million will be spent locally on the purchase of goods and services involved in the construction of the proposed mine.

### Jobs and investment during operation

#### Long term jobs

Once the proposed mine is operational 754 permanent jobs and 90 contractor maintenance jobs will be created on the mine site.

In addition, that there will be a flow-on effect that will generate around 150 to 200 permanent jobs in the local region.

#### Training and apprenticeship opportunities

A number of entry level jobs for school leavers, including apprenticeships and traineeships will be created among the long-term jobs once the proposed mine is operational.

*The Xstrata QMEA Education Partnership* between Xstrata Coal, the Queensland Department of Education and the Queensland Minerals and Energy Academy will provide \$720,000 over three years for funding, equipment, curricula enrichment and



*The Project will bring benefits to Wandoan and the region. Mining will not replace farming in the district but will help create a strong mixed local economy.*

school-industry liaison to Wandoan and Taroom State Schools, and Miles High School.

The partnership will:

- support the application for a Federally-funded Trade Training Centre in the region
- support a program for Wandoan district employers to hire apprentices in school-based or full-time apprenticeships or traineeships
- provide incentive grants to Wandoan district employers to hire apprentices in school-based or full-time apprenticeships or traineeships.

#### A strong local economy

It is anticipated that, on average, between \$13 million and \$16 million will be spent locally each year on the purchase of goods and services to support the mining operations.

#### Support from Xstrata Coal for economic development

A comprehensive Social Involvement Plan will be developed for the Project in consultation with the community, Western Downs Regional Council and the Queensland Government, for implementation once construction of the mine is approved. This plan will include:

- Initiatives and policies for business opportunities and economic development during both construction and operations, to encourage participation by local business in opportunities generated by the Project
- Initiatives and policies for employment and training to encourage participation by local job-seekers in employment and training opportunities generated by the Project

### Long term economic development

Results that will be seen from the construction phase of the proposed mine include:

- Greater private sector investment in the Wandoan region
- An increase in the number and type of businesses in the region
- A return to population growth to help reverse the current trend of declining population in the region
- Attraction of young people to move to, return to, or stay in the region
- Payment of rates to the Western Downs Regional Council is expected to assist in providing a wide range of services to benefit the local community, including roads, cultural and sporting facilities, along with community and economic development services
- The payment of royalties to the Queensland Government over the life of the proposed mine.

All of these things will help the Wandoan economy transition from being solely reliant on agriculture, to being a robust, mixed economy with strong foundations in mining, service provision, infrastructure and agriculture.

The Project will bring benefits to Wandoan and the region. Mining will not replace farming in the district but will help create a strong mixed local economy.

*Regional economic calculations are based on the Darling Downs statistical division.*

#### To find out more:

Talk to a member of our project team, call our free-call information line **1800 052 797**. The EIS and the Coordinator-General's Report are available online at [www.wandoancoal.com.au](http://www.wandoancoal.com.au) and can be viewed at the Xstrata Coal Shopfront in Royd Street, Wandoan.

#### Xstrata Coal Queensland

Level 2, 340 Adelaide St,  
PO Box 2587 Brisbane QLD 4001  
[www.xstrata.com](http://www.xstrata.com)